



PARTNERSHIP PLANS 2009 - 2010

This plan shows the priorities for Tending Crime and Disorder Reduction Partnership (CDRP) for 2009 – 2010.

The priorities have been identified through our Strategic Assessment of crime which involved a detailed analysis of crime, intelligence and public consultation.

The Responsible Authorities Group agreed the following priorities for the CDRP to focus on in the next 12 months:

- Anti Social Behaviour and Public Reassurance
- Volume Crime
- Alcohol and Drugs Related Issues

Respondents to the CDRP Community Safety Survey 2009 stated that the top 3 priorities for making Tendring a safer place to live should be:

- Reducing Anti social behaviour,
- Reducing Alcohol related crime/ nuisance, and
- Reducing the fear of crime

Respondents to the CDRP Stakeholder event 2009 stated that the top 3 priorities for making Tendring a safer place to live should be:

- Reducing Anti social behaviour,
- Reducing Volume Crime including Arson and
- Reducing Drug Misuse.

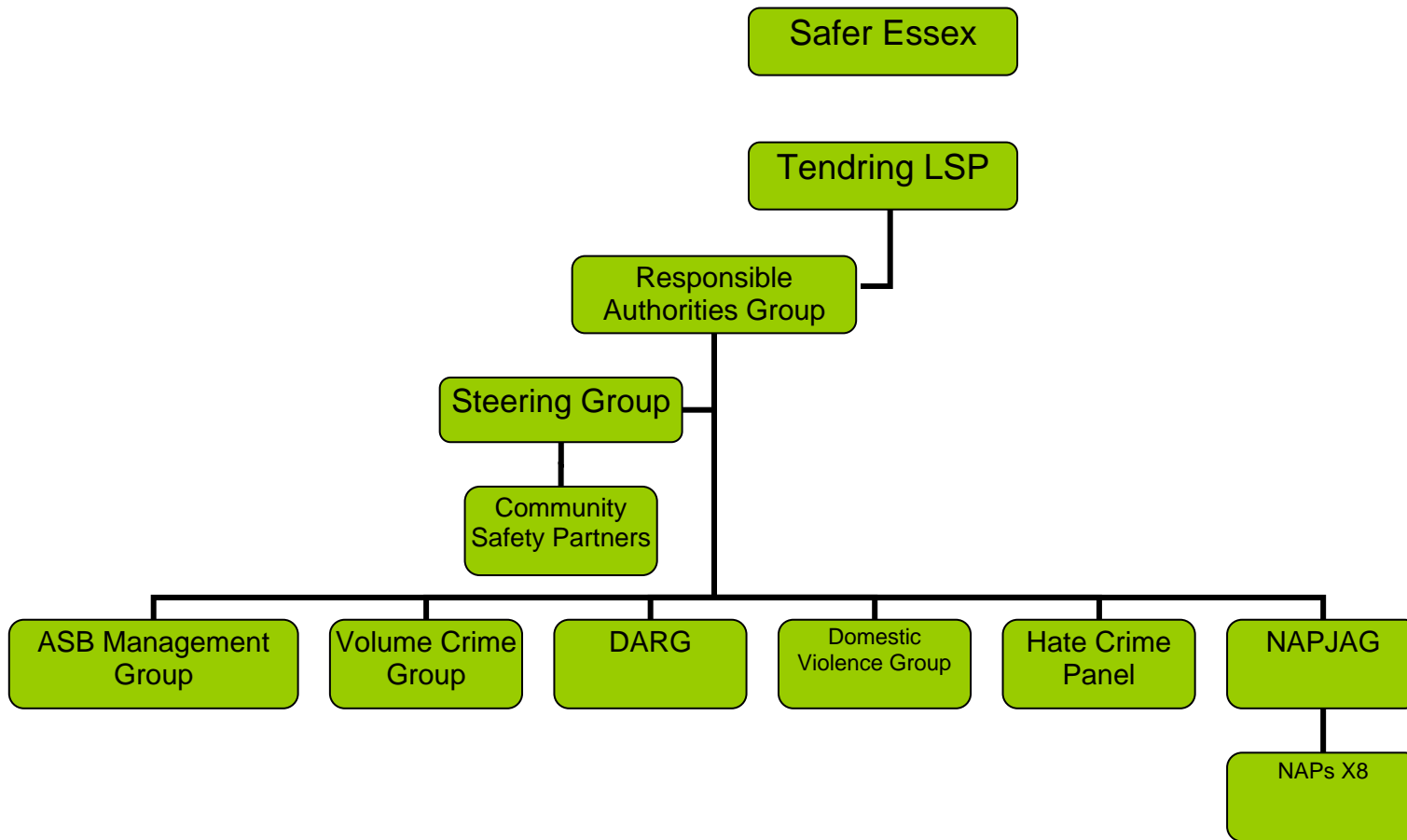
The Annual Partnership Plan is supported by a range of funding streams that are collectively pooled together to maximise their impact upon crime reduction.

The Strategic Assessment and Partnership Plans will be refreshed each year until 2011 to reflect changing priorities, new key issues and emerging crime trends within our communities. This will assist the CDRP and its partner agencies to achieve their objectives.

The detailed Partnership Plan set out below, details actions to achieve targets set for our top priorities. However, these may be subject to change if other more urgent crime reduction priorities are identified and need to be addressed or actioned by the CDRP.

The delivery of the interventions set out under each of the Key Strategic Themes will be through the subgroups which form part of the CDRP structure as shown on the diagram overleaf.

Each of the subgroups will be responsible for a rolling Annual Partnership Plan which indicated how it will deliver against relevant targets set out in the Partnership Plans,



2008-2011 Essex Community Safety Performance Indicators

| Performance Indicators | Nat Ind | APAC/LAA2 | Data Source | Reporting Agency | Suggested Key Performance Monitoring Groups | Comments |
|--------------------------------------|---------|------------|------------------------------|------------------|---|--|
| Serious Violent Crime Rate | NI15 | APACS | iQuanta | Police | Police | |
| Serious Acquisitive Crime Rate | NI 16 | APACS | iQuanta | Police | Police | Likely to be identified priority in Essex CS Agreement |
| Perceptions of Anti-social Behaviour | NI 17 | APACS/LAA2 | Place Survey/ ECC Tracker | ECC | ECC/CDRPs PEOPLE FEEL SAFE AFTER DARK Year 1 Target (4.33% increase + baseline weighting) 51.7 Year 2 Target (4.33 increase + baseline weighting) 53.9 Year 3 Target (4.33 increase + baseline weighting) 56.0 | PERCEPTIONS OF ASB Year 1 Target (3.3% reduction + baseline weighting) 23.1 Year 2 Target (3.3% reduction + baseline weighting) 22.3 Year 3 Target (3.3 reduction + baseline weighting) 21.5 |
| Adult Re-offending Rates | NI 18 | APACS/LAA2 | Probation | Essex Probation | Probation | Was LAA1 Priority 10.4 - Interim County baseline identified, actual baseline expected Summer 08, unlikely that data will be avail at district level |
| Youth Re-offending Rate | NI 19 | APACS | YOT | YOT | YOTs | Likely to be identified priority in Essex CS Agreement |
| Assault with injury crime rate | NI 20 | APACS/LAA2 | iQuanta | Police | Police/CDRPs/ECC Year 1 Target (5% reduction + baseline weighting) 972 Year 2 Target (8% reduction + baseline weighting) 941 Year 3 Target (10% | Likely to be identified priority in Essex CS Agreement |

| | | | | | | |
|--|-------|---|--------------------------------------|---------------------|--|--|
| | | | | | reduction + baseline weighting) 921 | |
| Dealing with local concerns about ASB and crime issues by the Local Council and Police | NI 21 | APACS | Place Survey | ECC | LAs/Police | Awaiting Place Survey Guidance, likely data will be available every 2 years |
| Perceptions of parents taking responsibility for the behaviour of their children in the area | NI 22 | | Place Survey/possibly ECC Tracker | ECC | ECC (Children and Young People's Service)/CYPSPs | Was LAA1 Priority 11.4. Priority in the Essex Children and Young People's Plan |
| Perceptions that people in the area treat one another with respect and dignity | NI 23 | | Place Survey | ECC | ECC | Was LAA1 Priority 11.3. |
| Satisfaction with the way Police and local authority dealt with ASB | NI 24 | APACS (*DELAYED* to 2009/10) | TBC | Police/LAs | LAs/Police | |
| Satisfaction of different groups with the way Police and Local Council dealt with ASB | NI 25 | APACS (*DELAYED* to 2009/10) | TBC | Police/LAs | LAs/Police | |
| Specialist support to victims of serious sexual offence | NI 26 | APACS (*DELAYED*) to 2009/10 | TBC | LAs | TBC | |
| Understanding of local concerns about ASB and Crime by Police and Local Council | NI 27 | APACS | Place Survey | ECC | LAs/Police | Likely data will be available only every 2 years |
| Knife Crime Rate | NI 28 | APACS | iQuanta | Police | Police | Likely data will only be shared at Force level |
| Gun Crime Rate | NI 29 | APACS | iQuanta | Police | Police | Likely data will only be shared at Force level |
| Re-offending Rate of Prolific and Priority Offenders | NI 30 | APACS | Probation (County PPO Grp) | County PPO Group | Probation/Police/ CDRPs | Data reported at county level only |
| Repeat Incidents of Domestic Violence | NI 32 | APACS (*DELAYED*) to 2009/10 | Police | Police | ECC/Police/CDRPs Year 1 Target (5% reduction + baseline weighting) 669 | |

| | | | | | | |
|---|-------|-------------------------------------|---|---------------------|---|--|
| | | | | | Year 2 Target (8% reduction + baseline weighting) 648 Year 3 Target (10% reduction + baseline weighting) 634 | |
| Arson Incidents | NI 33 | APACS | EFRS | EFRS | EFRS/Police | Data reported at county level only |
| Domestic Violence - Murder | NI 34 | APACS | Police | Police | Police | Data reported at Force level only |
| Building resilience to violent terrorism | NI 35 | APACS (*DELAYED*) to 2009/10 | TBC | LSP | LSPs | |
| Protection against terrorist attacks | NI 36 | APACS (*DELAYED*) to 2009/10 | TBC | TBC | TBC | |
| Drug related (class A) offending rate | NI 38 | APACS (*DELAYED*) to 2009/10 | TBC | EDAP | EDAP/CDRP/Police | |
| Rate of Hospital Admissions per 100,000 for Alcohol Related Harm | NI 39 | LAA2 | PCT | PCT | EDAP | DoH ratifying Hospital Episode Statistics, awaiting results of the ratification before county targets can be set for LAA2. |
| Drug users recorded as being in effective treatment | NI 40 | | National Drug Treatment Monitoring System (NDTMS) | EDAP | EDAP | Data reported at county level only |
| Perceptions of drunk or rowdy behaviour as a problem | NI 41 | APACS | Place Survey, ECC Tracker | ECC | EDAP/CDRP | One portion of the ASB index measure makign up LAA1 Indicator Priority 11.1 |
| Perceptions of drug use or drug dealing as a problem | NI 42 | APACS | Place Survey, ECC Tracker | ECC | EDAP/CDRP | LAA1 Indicator Priority 10.6, part of Priority 11.1 Index measure |
| Young People within the Youth Justice System receiving a conviction in court who are sentenced to custody | NI 43 | | YOT | Youth Justice Board | YOTs/YJB | Data reported at county level only |
| Ethnic compositions of offenders on Youth Justice System disposals | NI 44 | | YOT | Youth Justice Board | YOTs/YJB | Data reported at county level only |

| | | | | | | |
|---|--------|------------|---------------|---------------------|-------------------------------------|--|
| Young Offenders engagement in suitable education, employment, or training | NI 45 | | YOT | Youth Justice Board | YOTs/YJB | Data reported at county level only |
| Young Offenders access to suitable accommodation | NI 46 | | YOT | Youth Justice Board | YOTs/YJB | Data reported at county level only |
| People killed or seriously injured in road traffic accidents | NI 47 | APACS | ECC | ECC | Essex Casualty Reduction Board/ECC | Measured using a 3-yr rolling average based on calendar yr. |
| Children killed or seriously injured in road traffic accidents | NI 48 | | ECC | ECC | Essex Casualty Reduction Board/ECC | Measured using a 3-yr rolling average based on calendar yr. |
| Number of primary fires and related fatalities and non-fatal casualties, excluding precautionary checks | NI 49 | | EFRS | EFRS | EFRS | Data reported at county level only |
| Children who have experienced bullying | NI 69 | | Tellus Survey | ECC | CYPSPS/ECC | Data reported at county level only, academic year |
| First time entrants to the Youth Justice System aged 10-17 | NI 111 | APACS/LAA2 | YOT | YOT/YJB | YOT/YJB | Data available at district level - though previously only reported to YJB at YOT level |
| Substance misuse by young people | NI 115 | LAA2 | Tellus Survey | ECC | EDAP/CYPSP | Data reported at county level only. Likely to be a priority in the Essex CS Agreement. |
| Offenders under probation supervision living in settled and suitable accommodation at the end of their order or licence | NI 143 | | Probation | Probation | Probation/LAs | |
| Offenders under probation supervision in suitable employment at the end of their order or licence | NI 144 | | Probation | Probation | Probation/LAs | |
| Improved street and environmental cleanliness (levels of litter, detritus, graffiti and fly-posting) | NI 195 | LAA2 | ECC | ECC/DeFRA | Waste Management Advisory Board/LAs | |

| | | | | | | |
|---|--------|--|--------------------|-----------|-------------------------------------|--|
| Improved street and environmental cleanliness – fly tipping | NI 196 | | ECC | ECC/DeFRA | Waste Management Advisory Board/LAs | |
| Repeat Incidents of Domestic Violence | LOC | LAA2 (Local Indicator) | Police | N/A | ECC/CDRPs/Police | District data will be made available through CDRU on a monthly basis. Likely to be a priority in the Essex CS Agreement. |
| Feeling Safe at night | LOC | LAA2 (Local Indicator) | ECC Tracker Survey | N/A | ECC/CDRPs | LAA1 Local Indicator Priority 10.3. Data will continue to be made available through CDRU. Likely to be a priority in the Essex CS Agreement. |
| Number of young victims aged 0-19 years | LOC | Essex Children and Young People's Plan | | | CYPSPS/ECC/CDRPs/Police | Priority in the Essex Children and Young People's Plan, was LAA1 Priority 8.2, District data will continue to be made available through CDRU |

Strategic Theme 1 – Reducing the incidence of anti social behaviour & Increasing Public Reassurance

Key Headline Targets: Reducing the Incidence of Anti Social Behaviour by 5% from 2008/09 baseline and Increasing Public Reassurance, Feeling safe during the day 91% and feeling safe at night 60%.

| Intervention | Inputs/Funding | Outcomes /Measurement | Contribution to Target(s) | Milestones | Lead Officer |
|--|---|---|---------------------------|--|------------------|
| What do we want to achieve? | How are we going to achieve this? | How will we know we have been successful? | | | |
| 1.1 A reduction in the number of ABCs which are breached and result in an application for an ASBO by reducing offending by children and young people by increasing positive attitudes and behaviours amongst those at risk of offending especially 8-13 year olds. | Support young people who have been issued with an ABC or ASBO through NACRO Youth Mentoring scheme. | Reduction or cessation of re-offending by at least 40% of young people supported through the mentoring schemes as measured by police records. | NI 17 NI 21 | Monthly Monitoring Forms and Quarterly Statistical returns to CDRP | ASB Co-ordinator |
| 1.2 An increased reporting of ASB across Tendring through the ASB Reporting Line. | Continue to promote the use of Tendring ASB Reporting Line through media, publicity and promotions. | Increase the number of people who use the ASB Reporting Line. Baseline Reduction – 5% | NI 17 NI 21 NI 27 | Quarterly reports to RAG. | ASB Co-ordinator |

| | | | | | |
|--|---|---|--|----------------------------------|-------------------------|
| <p>1.3 To reduce anti-social and aggressive behaviour by young people in the family home and in turn reduce the level of anti-social behaviour these young people exhibit in the community.</p> | <p>Fund Stopping Aggression and Anti-Social Behaviour in Families (SAAIF) to run a programme for young people and their parents/carers.</p> <p>Running a parallel group programme for young people who are perpetrating or who have witnessed domestic violence; to support young people to develop positive and healthy relationships with others. For parents to be in parallel running groups to learn effective parenting skills.</p> | <p>Overall reduction of 70% in the number of incidents for each family reported to the police.</p> <p>60% reduction in teenager's problem behaviour as measured by the use of the Strengths & Difficulties questionnaire.</p> <p>Each family to attend a minimum of 10 sessions.</p> <p>85% attendance rate for those offered a place on the day workshop.</p> <p>Self evaluation to be completed by parents/carers regarding the effect the programme has had on family life.</p> <p>All targets to be confirmed with SAAIF</p> | <p>NI 17 NI 21 NI 27</p> | <p>Quarterly reports to RAG.</p> | <p>ASB Co-ordinator</p> |
| <p>1.4 Pilot Families Intervention Project in conjunction with ECC</p> | <p>Awaiting targets Liz Martlew, Essex Parenting Commissioner</p> | <p>To be confirmed Liz Martlew, Essex Parenting Commissioner.</p> | <p>NI 17 NI 21 NI 27 NI 32</p> | | |
| <p>1.5 To engage with our partners and communities to identify specific hotspots for anti social behaviour and take remedial action to tackle them.</p> | <p>Anti-social behaviour problems will be identified through Neighbourhood Action Panels. Panels to co-ordinate response to identified problem with assistance from partner agencies.</p> | <p>Success will be monitored through the NAPs Action Plans and monitored by the NAP JAG.</p> | | <p>Quarterly reports to RAG.</p> | <p>Chair of NAP JAG</p> |

| | | | | | |
|---|--|---|-------------|---|--|
| <p>Link work between partner agencies (ie ASB Team, Neighbourhood Policing Teams and other partner agencies) to identify specific hotspots and adopt a coordinated approach to tackling ASB.</p> <p>Maintain effective use of dispersal orders.</p> | <p>Ensure intelligence and information is fully utilised to combat ASB throughout Tendring.</p> <p>Identify hot spots or trends requiring action and report to the ASB Management Group.</p> <p>Reduce the incidents of ASB, nuisance, crime and intimidation within a specified area of the community primarily caused by young people or late night revellers.</p> | <p>Quarterly ASB Management Group Meetings and information sharing.</p> <p>Quarterly ASB Management Group Meetings and information sharing.</p> | | | <p>Chair of ASB Management Group / ASB Coordinator</p> <p>Chair of ASB Management Group / ASB Coordinator</p> |
| <p>1.6 To initiate a programme of media opportunities to promote 'good news' articles and crime reduction achievements to reduce fear of crime and promote Tendring CDRP.</p> | <p>Develop a diary of positive press releases for 2009 -10 to neutralise the negative press articles on crime, which increase fear of crime.</p> <p>Produce regular CDRP adverts in local press.</p> <p>Utilise the work and successes of NAPs to promote a greater sense of feeling safer and that community issues are being actioned and resolved.</p> | <p>Reduction in fear of crime by 4.33% as measured through ECC Survey</p> <p>Numbers of press articles used by local media.</p> | <p>NI17</p> | <p>At least 1 positive press article released per month by CDRP Officer</p> <p>CDRP Website</p> | <p>Linda Belgrove Essex Police Authority</p> <p>CDRP Press /Media Officer</p> <p>Community Safety Officer</p> <p>CDRP Press /Media Officer</p> |

| | | | | | |
|--|--|--|--|--|-------------------------|
| <p>1.7 To increase the level of 'uniformed presence' across Tendring. (Community Safety Survey 15% of respondents wanted more visible policing (2009)).</p> | <p>Requires a partnership approach to deliver the broad range of interventions involved.</p> <p>All Partners to promote Specials and Business Specials within their own organisations.</p> | <p>Increase numbers of Special Constables recruited</p> <p>Increase numbers of PCSOs in post</p> | | <p>Annual survey to measure perceptions.</p> | <p>All RAG partners</p> |
|--|--|--|--|--|-------------------------|

| Intervention | Inputs/Funding | Outcomes /Measurement | Contribution to Target(s) | Milestones | Lead Officer |
|---|---|--|---------------------------|--------------------------------|---------------------------------|
| <p>What do we want to achieve?</p> <p>1.8 To deliver a Community Payback programme within Tendring to enable the unpaid work done by offenders in Essex to receive public recognition and to allow the public to contribute ideas on work projects to be undertaken.</p> | <p>How are we going to achieve this?</p> <p>Community Safety Officer to organise relevant meetings with TDALC, CDRP partners, community groups and other local representatives to contribute ideas for prospective projects.</p> <p>Community Safety Officer to liaise with Essex Probation to deliver the programme of activity.</p> <p>Community Safety Officer / CDRP Media personnel to co-ordinate subsequent press coverage and promotion of completed programmes in CDRP Newsletter.</p> | <p>How will we know we have been successful?</p> <p>The use of allocated hours of Community Payback allocation to deliver projects within the district.</p> <p>100% media follow-ups/ press releases.</p> <p>Feedback letters, and individual project evaluation reports to be collated by Community Safety Officer.</p> | <p>NI17</p> | <p>Quarterly Report to RAG</p> | <p>Community Safety Officer</p> |

| Intervention What do we want to achieve? | Inputs/Funding How are we going to achieve this? | Outcomes /Measurement How will we know we have been successful? | Contribution to Target(s) | Milestones | Lead Officer |
|---|--|---|--|--|---------------------|
| <p>1.9 To improve knowledge and information sharing for professionals and the wider communities in dealing effectively with crime and disorder. To consult stakeholders.</p> | <p>Statutory CDRP Public Facing Event</p> | <p>Number of attendees Actions arising from conference. Conference evaluation shows that attendees are better informed about crime and disorder, enforcement and their own part within the CDRP. Service gaps are highlighted and the CDRP identifies how these gaps may be filled.</p> | <p>NI21 NI27 Statutory Requirement</p> | <p>Event to take place during 2009/10.</p> | <p>All Partners</p> |

Strategic Theme 2 – Reducing the level of Volume Crime

Key Headline Target: Reducing the level of volume crime by 5% from 2008/09 baseline

| Intervention What do we want to achieve? | Inputs/Funding How are we going to achieve this? | Outcomes /Measurement How will we know we have been successful? | Contribution to Target(s) | Milestones | Lead Officer |
|---|--|---|---------------------------|---|--|
| <p>2.1</p> <p>Develop initiatives to reduce volume crime</p> | <p>Volume Crime Group will initiate one high profile and intelligence led crime reduction campaign per quarter, as determined by crime figures.</p> <p>Better sharing of information between partners. Police analyst to provide quarterly Problem Profiles to volume crime group in order for all partners to engage in problem solving.</p> <p>Volume Crime Group will meet at least once per quarter and agree actions for each new campaign.</p> <p>Fund the Licensing Support Officer in order to support pro-active licensing initiatives e.g. 1. BOBB scheme, 2. Test Purchasing 3. Directed licensed premises visits</p> | <p>Press article(s)/ publicity will accompany each campaign.</p> <p>All volume crimes will be kept below targets.</p> <p>The specific crime targeted by a campaign will reduce:</p> <p>Volume Crime by 5%</p> <p>Reduced volume crime associated with licensed premises. Increase public re-assurance</p> <p>Reduction in crime statistics for areas associated with licensed premises.</p> | <p>NI 20</p> | <p>One intelligence led campaign per quarter</p> <p>Quarterly Report to RAG</p> | <p>Chair of Volume Crime group.</p> <p>Chief Inspector Jonathan Hayter</p> <p>Essex Police</p> |

| | | | | | |
|--|---|--|-------------------------------------|---------------------------------------|--|
| <p>2.4 To improve information to victims, professionals and the wider communities in dealing effectively with domestic violence</p> | <p>To provide vital information to victims of Domestic Violence and professionals through leaflets, promotional events etc. Other media campaigns as required.</p> | <p>Victims of domestic violence and professionals are better informed of the services that are available to them.</p> | <p>NI 32 Repeat Incidents of DV</p> | <p>Quarterly Reports</p> | <p>Chair of DV Forum Mark Sayer</p> |
| <p>2.5 To proactively support positive action against perpetrators of domestic violence.</p> | <p>By increasing charge and cautions for perpetrators of domestic violence.</p> <p>Continue to fund the Probation Women's Safety Worker and support the IDAP programme.</p> | <p>Increase in line with Essex Policing Targets charge and caution (sanction detection) rates for perpetrators of domestic violence as a proportion of the total number of domestic violence incidents recorded by the Police.</p> <p>Numbers of perpetrators on IDAP.</p> <p>% of successful completion offenders on IDAP.</p> <p>Numbers who re-offend following successful completion of programme or whilst on the programme.</p> <p>Numbers of women supported through the WSW.</p> <p>Information exchanges with Essex Police VVU on IDAP offenders on programme and Victims supported by WSW.</p> | <p>NI 32 Repeat Incidents of DV</p> | <p>Quarterly Reports to DV Forum.</p> | <p>DS Terri Hook</p> <p>Essex Police</p> |

| | | | | | |
|--|--|---|---|--------------------------|--|
| <p>2.6 Reduce incidents of Domestic Violence</p> | <p>This type of crime impacts on the mental and physical health of victims and their families and consequently has implications for a wide range of services.</p> | <p>Support the delivery of activities led and delivered by the Essex Domestic Abuse Strategy Group.</p> <p>Support the delivery of activities led by the Tendring Domestic Abuse Forum.</p> | <p>NI 32 Repeat Incidents of DV</p> | <p>Quarterly Reports</p> | <p>Chair of DA Forum Leanne Thornton</p> |
| <p>2.7 Reduce incidents of Hate Crime</p> | <p>This type of crime impacts on the mental and physical health of victims and their families and consequently has implications for a wide range of services.</p> | <p>Support the delivery of activities led by the Tendring and Colchester Hate Crime Panel</p> | | <p>Quarterly Reports</p> | <p>Chair of Hate Crime Panel Leanne Thornton</p> |
| <p>2.8 To reduce the number of young people who are victims of crime.</p> | <p>Deliver 2 week Crucial Crew event including scenarios on avoiding the chances of becoming a victim of crime and avoiding drugs and alcohol, also crime reduction and community safety scenarios.</p> <p>Engage 1400 year 6 pupils from primary schools across Tendring.</p> | <p>Number of Attendees at Crucial Crew.</p> | <p>NI 69 NI115</p> | <p>Annual Evaluation</p> | <p>Community Safety Officer</p> |

Strategic Theme 3 – Reducing alcohol and drug misuse within the community.

Key Headline Targets: **Reducing Alcohol & Drug Misuse within the Community. Last year’s target was 24 offences and it is recommended that this is set as the baseline, with a target for 2009/10 as 25 (a 5% increase).**

| Intervention What do we want to achieve? | Inputs/Funding How are we going to achieve this? | Outcomes /Measurement How will we know we have been successful? | Contribution to Target(s) | Milestones | Lead Officer |
|---|---|--|---------------------------|--|---|
| 3.1 Targeted test purchasing for alcohol | 2 RAG funded Operations per year (Refer to item 3.5) | No of failed test purchases. No of licences reviewed | NI17 NI20 NI19 | Quarterly reports | Essex Police Trading Standards |
| 3.2 Disrupt Local Supply through Police Drug Operations | Essex Police | No of Class A seizures. Amount (g) of Class A seized. No of Class A drug houses identified. No of Class A supply offences brought to justice (caution or conviction) Tending Target - | NI38 | Quarterly reports | Tending Police |
| 3.3 To reduce crime and substance misuses among adults referred and provide a support structure to enable them to obtain employment/training, housing and debt management advice. | Continue to fund Open Road - Floating Support Worker. Floating Support Worker to actively promote this service to all referrers. | 170 New Clients receive floating support. 80% of these clients remain engaged. 70% clients with housing needs successfully obtaining and remaining in housing. 30% of unemployed clients entering work/training or voluntary work. Less than 10% clients re-offending whilst engaged in treatment. | NI 38 | Quarterly reports. End of year evaluation report. | Tending Drug and Alcohol Reference Group (DARG) |

| | | | | | |
|---|--|---|-------|------------------------------|-------------------------------------|
| | | 60% of clients successfully negotiating financial debts, utilities & rental arrears or monetary value £220,000. | | | |
| 3.4 Tendring KEEP Project | Employ Open Roads worker to work with specialist police officers to address the most prolific drug and alcohol misusing offenders. | Provide a dedicated team of officers to target, educate and support to alter offending behaviour. List of prolific offenders maintained. | NI 38 | Quarterly KEEP report to RAG | Essex Police Inspector Kevan Griggs |
| 3.5 NEE DARG Initiatives | <p>1. Increased test purchasing for underage sales of alcohol – £1400 per day.</p> <p>2. Targeting information on drug and alcohol misuse for parents.</p> <p>3. Produce information (leaflet) for service providers and primary care.</p> <p>4. Liaison with A & E minor injuries unit</p> <p>£10,000</p> | <p>To reduce the level of sales of alcohol to children. To raise trader awareness of legislation and consequence to non compliance. To raise community awareness to forward intelligence in respect of underage sales.</p> <p>Reduce rate of underage sales to below 15%</p> <p>Multiagency approach to provide information and advice session for parents and pupils, with follow on parenting support for up to 6 weeks</p> <p>Details of substance misuse services available in Tendring with opening times. – Leaflet to be available October 2008</p> <p>Ensuring accurate data collection of incidences of drunkenness as a factor in attendance at A & E. Data sharing Improve knowledge in A & E of</p> | | Quarterly report to RAG | Chair of NEE DARG |

| | | | | | |
|--------------------------------------|---|---|--|---------------|------------------------------------|
| | | drug and alcohol services | | | |
| 3.6 2 Smart 4 drugs | Deliver 2 smart 4 drugs project to pupils in years 7 and 8. | Provide information about the dangers and risks of drugs in a way that engages the young people of year groups 7 and 8. | | Annual Report | Essex Police Inspector Andy Fusher |